

**PLAN HIDROLÓGICO INSULAR
DOCUMENTO DE AVANCE
PLANOS DE INFORMACIÓN**

Altimetria (m.s.n.m.)

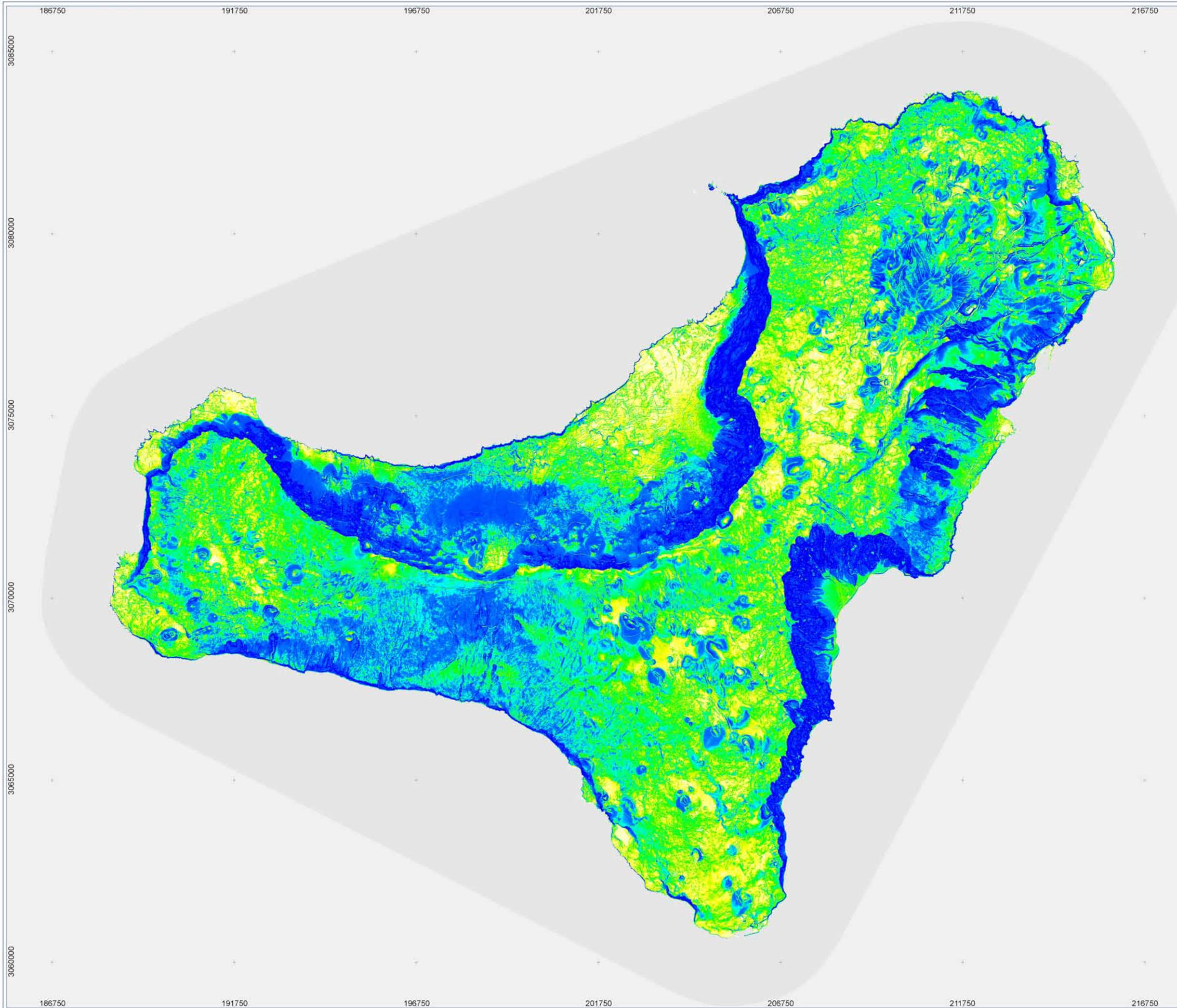
Altimetria

-10
0.00
100
200
300
400
500
600
700
800
900
1000
1100
1200
1300
1400
1500
1600

**MORFOLOGIA
MAPA DE ELEVACIONES**


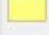
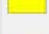
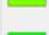
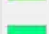





Hoja: EH100
 Escala: 1:100.000
 Fecha: Julio 2012

Referencia:
 I.1.01

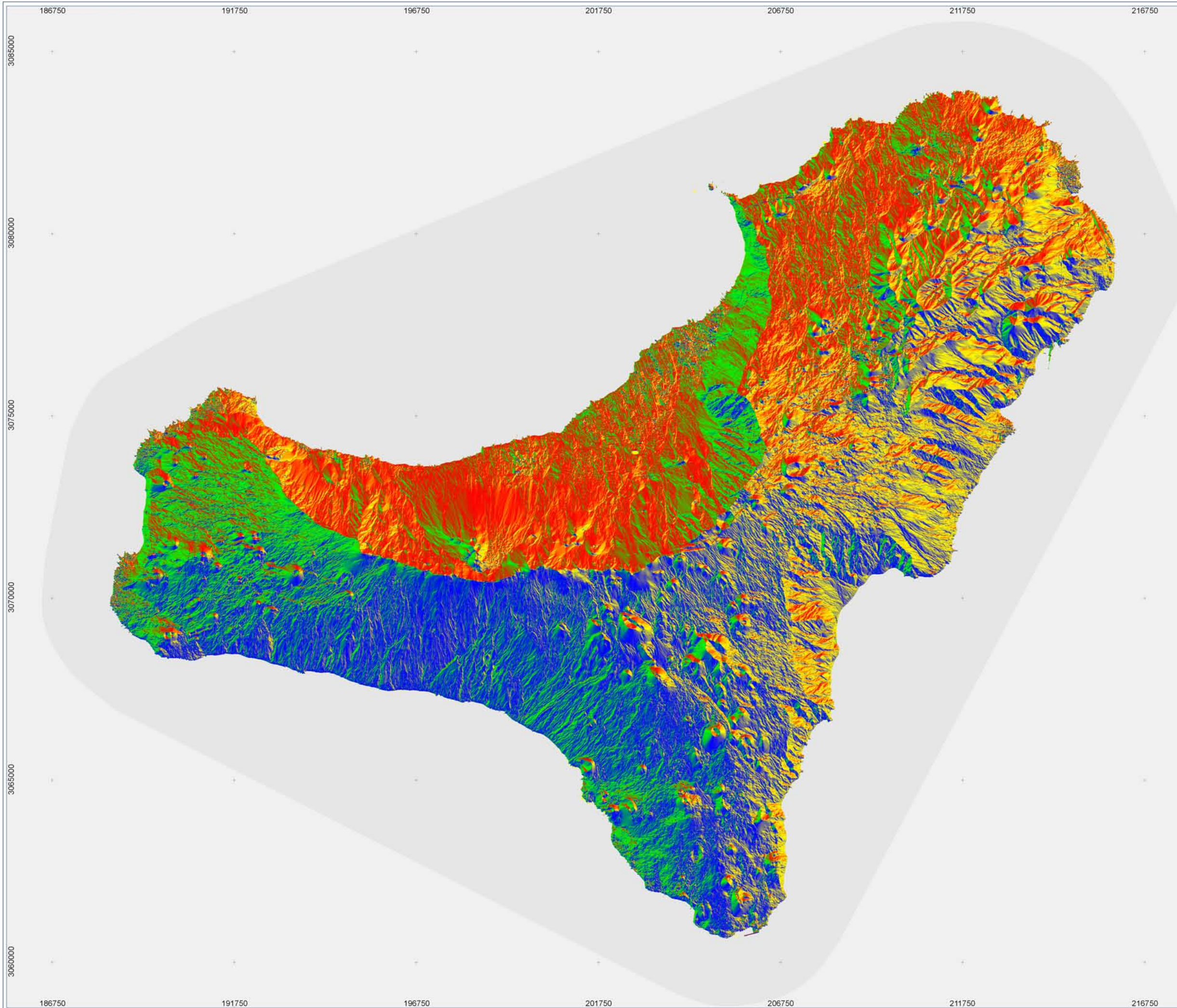


PLAN HIDROLÓGICO INSULAR
DOCUMENTO DE AVANCE
PLANOS DE INFORMACIÓN


Pendiente

	0%
	0 - 5%
	5 - 10%
	10 - 15%
	15 - 20%
	20 - 30%
	30 - 40%
	40 - 50%
	50 - 100%
	> 100%

MORFOLOGIA
MAPA DE PENDIENTES



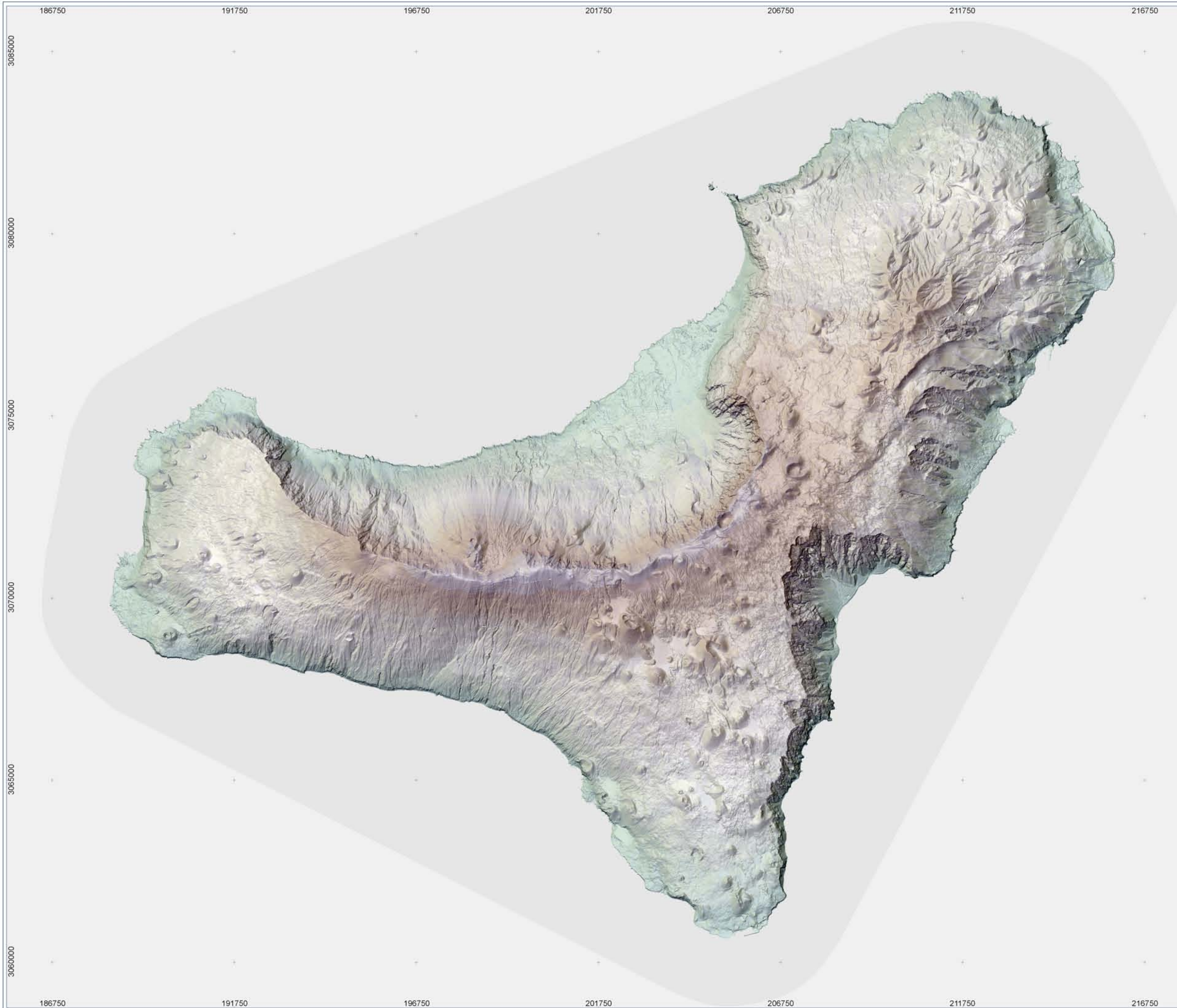
**PLAN HIDROLÓGICO INSULAR
DOCUMENTO DE AVANCE
PLANOS DE INFORMACIÓN**

- Orientación**
-  0° E
 -  90° E
 -  180° E
 -  270° E
 -  360° E

**MORFOLOGIA
MAPA DE ORIENTACIONES**

Hoja: EH100
Escala: 1:100.000
Fecha: Julio 2012

Referencia:
I.1.03



**PLAN HIDROLÓGICO INSULAR
DOCUMENTO DE AVANCE
PLANOS DE INFORMACIÓN**

**MORFOLOGIA
MAPA DE RELIEVE**

Hoja: EH100
Escala: 1:100.000
Fecha: Julio 2012

Referencia:
I.1.04